



6/11/2025

*Law - La Jonquil***Georgia State Council Newsletter****Volume 37, Issue 1****"Butterflies and Favorite Summer Memory In Georgia "****Table of Contents:**

<i>President's Message</i>	<i>Page 1</i>
<i>First Vice President</i>	<i>Page 2</i>
<i>Second Vice President</i>	<i>Page 2</i>
<i>Recording Secretary</i>	<i>Page 3</i>
<i>Corresponding Secretary</i>	<i>Page 3</i>
<i>Treasurer</i>	<i>Page 4</i>
<i>Parliamentarian</i>	<i>Page 4</i>
<i>Jr. Past Pres/Disaster Fund Chair</i>	<i>Page 5</i>
<i>Awards Chair</i>	<i>Page 6</i>
<i>Education Chair</i>	<i>Page 6</i>
<i>Philanthropic Director</i>	<i>Page 7</i>
<i>SERC Coordinator</i>	<i>Page 7</i>
<i>St Jude Chair</i>	<i>Page 8</i>
<i>Alpha Delta</i>	<i>Page 9</i>
<i>2024-25 Awards Winners</i>	<i>Page 10</i>
<i>Outstanding Awards Winners</i>	<i>Page 11</i>
<i>Association of the Arts Winners</i>	<i>Page 12</i>

Attachments:

Philanthropic FAQ (IC)
Philanthropic Service Guidelines (IC)
Georgia State Council Philanthropic Awards
IC Reg Form
Fall Board Reg Form
SERC Reg, Ad, & Brookgreen Gardens Tour Forms

President: Ruth Ann Edge**DATES TO REMEMBER**

- June 23, 2025
↪ IC Convention Hotel
Registration Deadline
- July 13-20, 2025
↪ IC Convention –
Embassy Suites by Hilton
Raleigh-Durham/Research Triangle
Cary, North Carolina
- August 31, 2025
↪ Georgia State Council Dues
(Full or ½)
- September 6 – 7, 2025
↪ Leadership/Fall Board (hosted
by Delta Nu & Sigma Chi)
Dalton Shrine Club
Dalton, Georgia
- September 15, 2025
↪ Tax Fact Form Due to ESA
Headquarters
- September 24, 2025
↪ SERC Conference
Hotel Registration Deadline
- October 1, 2025
↪ SERC Conference
Registration Deadline
- October 24 – 25, 2025
↪ SERC Conference
Myrtle Beach, SC
- January 31, 2026
↪ Georgia State Council Dues
(2nd half) and IC Dues
- February, 2026
↪ Mid-Year GSC Board Meeting
(hosted by Delta Iota) TBD
- April 15, 2026
↪ Post Marked Date for Georgia
State Council Awards Forms
- May 22 -24 2026
↪ GSC Convention
(hosted by Gamma Omega)
Houndslake Country Club
Hotel Rooms at Houndslake Inn



Madame Butterfly, Our President, says ...

Georgia summers have something for everyone's taste. Beautiful seaside beaches, spectacular mountains, peaceful lakes, and historic towns to visit.

Over the years I have experienced all of the beauty of Georgia, but the one that I remember most fondly is a week at Tybee Island. My family rented a condo on Tybee Island, and it was so wonderful to just relax and talk with family about whatever came to our minds. We enjoyed the sunrises and sunsets, cool breezes on the beach, walks and swimming. We went to Savannah for a day of sightseeing and dinner. It was a wonderful day even with the downpour that left us soaking wet and cold. I don't think anything can take away from the beauty of the huge old trees with Spanish moss flowing down like long hair. It is both eerie and beautiful. I look forward to many more memorable adventures in Georgia.

In May we celebrated Georgia State Council "Diamond Jubilee" at Amicalola State Park and Lodge. The view of the mountains from my room was breathtaking. The decorations, food, games, and just getting together with old and new friends was wonderful.



I can't thank Karen Smith, Susie Knudson, and my Delta Iota sisters enough for the beautiful Installation Ceremony.

I am humbled and proud to serve as your 2025-2026 Georgia State President.

We have a lot to look forward to in ESA this year. July will be busy with IC Convention in Cary, NC, and I hope to see many of my Georgia sisters and brothers there. In August I will host the Executive Board at Executive Retreat. In September we will be in Dalton, GA for Leadership/Fall Board hosted by Delta Nu and Sigma Chi. I am really looking forward to the Low Country Boil that Vicki Warren's husband, Jim, will prepare. In October the SERC Conference will be held in Myrtle Beach, SC. I hope you are planning to attend. We have our own Past President, Susan Garner running for office on the SERC Board. Our Mid-Year meeting will be hosted by Delta Iota; information will be given on date and place later. In May 2026, the Georgia State Convention will be hosted by Gamma Omega. It will be held at Houndslake Country Club in Aiken, SC.

As you can see, we have a lot to look forward to. I hope each of you will try to attend all the events. I hope each of you will set a goal to increase membership, attend the meetings, and spread the word that ESA is a wonderful organization to belong to. Spread your wings and fly high, let only your imagination be your limit.



Ruth Ann Edge

GSC President

.....
Breaking out of my cocoon and feeling fab!
.....



Butterflies Vibes from the Executive Board

Be a Pollinator on Your Way Up!

We are starting a fresh new Georgia year! I've been taking time to spread my butterfly wings as I have been driving to the three Dream Homes in Georgia, and this is giving me time to think in the car, too.

I got to thinking about what butterflies do. They play a vital role in pollination by transferring pollen from one flower to another. Now might be time to brush up on your ESA "elevator talk" and take every opportunity to share ESA (pollinate) when you are doing good deeds.



What is the elevator talk? It's a short and sweet paragraph where you share what ESA is about and what we do. You can review our awards listing from our May Convention for some remarkable things Georgia members have been doing. End your talk by noting how it has made such a wonderful difference in your life. Take every opportunity to step up and restart being a pollinator to share in our joy of ESA.

In addition, those going to IC and SERC should consider talking with other states about what they are doing to recruit new members. Bring that information back. Let me know and I'll share it with our Georgia members.



Sharron Smoot
1st Vice President

Planning Ahead

As your chapter begins meeting and making plans for the upcoming sorority year, I want to be on your mind/agenda. As 2nd VP of GSC, I am soliciting bids for 2027 GSC Convention. Please discuss it in your chapter meetings. Call me. Let's have a conversation about the tasks that are involved. Conventions are work but are also a lot of fun. Who wants to host? Please contact me via email or phone. The earlier I get a host the less you'll have to hear about it....



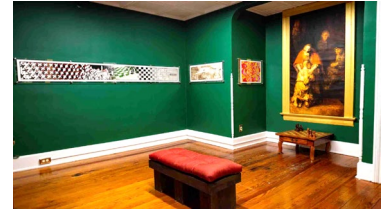
XOXO



Susan McVey
Second Vice President

A Nerdy Escape Room Note

Hi everyone, I'm trying to get together the members going to IC. I thought it would be fun to form a team for the Nerd Escape Room Tour on Tuesday, July 15, leaving the hotel at 1:30 p.m. I'm driving from Charleston (4 ½ hours) that morning and would be there in time. Let me know if you're interested so we can all sign up before the deadline of June 20th. I love that IC is so close.



Luanne Langmo,
(Nerdy) Recording Secretary

The Gastronomy of Summers Past

My childhood summers began with my June 1st birthday. There was a gastronomy from Georgia, North Carolina and Kansas, as we traveled to visit my grandparents and special aunts, uncles, cousins and dear friends.

In Georgia a special treat was my daddy's homemade ice cream. He made yummy, cooked egg base custard. After swimming at the Elk Lodge pool, we often stop at the Dairy Queen to bring home Dillys to share.

In North Carolina special birthday cakes included a Raggedy Ann cake given to me by my Great Aunt, whom we called "Sissy." Granny, daddy's mother, fried delicious apples that were from her apple trees. There was delicious Brunswick Stew made in a large cast iron pot.



In Kansas, Mommie Sue, mother's mother, made tasty French cookies and homemade noodles. Fresh vegetables from my Grandfather's garden were served daily. We ate foot long hot dogs and juicy watermelons from the Rio Grande. The ice cream was locally made, Pico Ice Cream. Scrumptious! Summer memories of sharing good food with my loving family. Thank you for following me down memory road lane.



The memories we make together this year will include more gastronomy with good friends in different places around our Council. In North Georgia at Leadership, we will share a Low Country Boil, as we chat about our philanthropic projects in the making. At Mid-Year we will contribute ideas, laugh about our travels, and enjoy another great meal. Then in May at the Inn at Houndslake we will gather to share tea in our summer best and celebrate all the good works accomplished this year.



Joy Lynn Tynes
Corresponding Secretary

A Family Summer and a Treasurer's Note

Hello everyone, my garden has been so beautiful this summer while watching all the butterflies flying around. It made me think of all of you. I am so happy to have gotten my wings at our 75th Annual State Convention "Diamond Jubilee."



I started my summer flying from my granddaughter's High School graduation which started at 8:00 am in Little Mountain and then flying to my grandson's High School graduation at Noon in Columbia, SC all on the same day! This was the last of my 6 grandchildren's high school graduations, next year we will start the College graduations.

With all the flying I have been doing I want to take this time to remind each chapter that at least one half of the state dues are payable by August 31st and the other half by January 31st. Yes, you can pay all your dues by August 31st.



Also, a reminder, your Federal Tax forms need to be completed by September 15, 2025. If anyone needs any help, you can email or call me at any time. If I don't know, I will find out for you.



Sheryl Gootee
Treasurer

Bylaws, Bylaws, Bylaws!

Good Morning, Afternoon, or Evening to Each of You!

Serving you as Parliamentarian this year is a pleasure and I hope we have a very smooth year! Part of my duties in this role include being on the Bylaws Committee. Susan Knudson and Sherry Presley are also serving on the Committee. Thank you, ladies! This Committee is responsible for reviewing our State Bylaws and proposing to the State Executive Board any amendments to be considered at the State Convention.



Any proposed amendments will be presented to the Executive Board for approval in accordance with the "Method of Amending the Georgia State Council Bylaws." I will send any proposed amendment(s) the Executive Board approves to each chapter for consideration prior to the final vote at Convention. Our committee will be working diligently for you, but that should not stop you from reviewing our Bylaws yourself. We welcome your input and wait to hear from you!



Gail Marchant
Parliamentarian

Many Thanks and the Beach

A big hello to all my GA ESA sisters and brothers! I want to first thank the Gavelettes, and our Convention Chairs Susan McVey and Gennie Gilvin for a truly great convention. The venue was beautiful, the food was great and we had lots of fun. I think that games on Friday night ought to be a permanent fixture. I also want to thank my Executive Board and Appointed Board for sharing your talents and dedication to ESA with all of us in Georgia this past year.

President Ruth Ann asked us to tell about our favorite summer memory. For me, it has to be going to the beach. As my dad was in both the US Power Squadron and a Commandant in the US Coast Guard Auxiliary, we visited many beaches in both Georgia, Florida, and even South Carolina. Although several members in my family had beach houses at Savannah Beach, we always seemed to vacation in Florida. Both my parents were avid fishermen and we visited most of the barrier islands in Georgia and some in SC by boat. Activities besides fishing were crabbing, hunting for seashells, picnicking, and eating lots of watermelon. In those days you could buy big watermelons 5 for a \$1.



Living in the Atlanta area I do miss the beach and the great seafood. It has been too long away from the coast, so I do plan to get back to the beach this year even if it's only a weekend. Hopefully, many of you will be visiting beaches this year.

I also know many of you do not formally meet during the summer, but please do not forget about our Disaster Fund this summer. We have already been witnesses to the floods and tornadoes that have ripped through communities these past few weeks. By the time this newsletter is published, we will be in hurricane season again. Many areas have still not recovered from last year's storms. Just putting aside \$1 a week until your chapter meets will give you a great start to donating to this great cause.



Do have a great summer – be safe, do not get sunburned and eat lots of watermelon!



Susie Knudson

Jr. Past President/Disaster Fund Chair



***On the Wings of our Butterflies
from our Appointed Officers...***

**“Congrats” to the 2024-2025 Awards Winners!
Be a 2025-2026 Winner!**

Attached to this newsletter is a list of the Award Winners and winners from various categories in the Association of the Arts. These Awards were presented at our most recent convention in Amicalola Falls in Dawsonville in May.



After you review the list, understand that you or your chapter could be on it next year! Just imagine that! It doesn't take much time to keep up with your hours, mileage and/or money from your “good deeds” that most of you do all year long. Start logging this information beginning April 1, 2025, through March 31, 2026. You might be surprised at how quickly your numbers and totals may accumulate

If your chapter does not participate in the awards program, please reconsider and join in. It is good to have healthy competition and it is certainly good to celebrate ourselves and each other. If you have any questions, please feel free to contact me anytime on my cell phone (770-846-1187).

Gail Marchant
Awards Chair

ABC's of your ESA Chapter

Happy Summer to YOU All,



I hope everyone is having a wonderful, fun and safe early summer. I would like to encourage each chapter to start working on your Educational for this year, as soon as you can, in order to enter your books into competition this year. It will be exciting to see what your chapters come up with for your themes. If you have any questions regarding your Educational Programs, forms, etc. please feel free to call me.

ESA Hugs,
Wanda Price
Educational Chair

Keep it up!

Hello GSC Family,

I hope you are all doing well. I am excited to be your State Philanthropic Director this year and appreciate President Ruth Ann for allowing me to serve. I just wanted to remind everyone to jot down any volunteer work you are doing to spread your wings with ESA. Make sure you keep up with your hours, mileage, monies donated, and items donated. Every little bit helps, so keep a pen and paper close by or, if you're like me, you send yourself an email reminder (LOL).

If you have questions, I have included in this newsletter the following:

- Frequently Asked Philanthropic Questions/Answers (IC)
- Philanthropic Service Guidelines (IC)
- Georgia State Council Philanthropic Awards



Thanks to Gennie Gilvin, all of this can be found on our website esageorgia.com under Awards, Philanthropic. Of course, you can always reach out to me with questions as well.

Susan Garner
Philanthropic Director

Fall Fun at the Beach

Hello GSC Family,

I am your SERC Coordinator this year and I appreciate President Ruth Ann for appointing me. As you know, SERC is hosting this year's IC Convention in Cary, North Carolina in July, and I hope to see many of you there.

In October, the SERC conference will be held at Myrtle Beach, South Carolina and we will be on the beach!! If you will be arriving early, there is a tour to the Brookgreen Gardens on October 23. I also hope that many of you will be attending. I am including the registration form and tour information in this newsletter.

If you haven't been to a SERC conference in a while or if you have never been, please consider attending. You'll have a great time!! I know I always do 😊.

Best,

Susan Garner
SERC Coordinator



Iced tea, Rum, Watermelon and More for St. Jude's!

April and May are always slow months with philanthropic monies. However, there are never slow days at St. Jude Hospital. I do hope all of you are gearing-up for a big year in St. Jude donations...three of those big days are occurring in June and July. For the first time we have three Dream Homes and all Georgia members have the opportunity to support St. Jude Hospital through these events.

Alpha Delta had their big event in April and I will let them share their good news with you.



At our meeting in February, I asked everyone to price a grilled cheese sandwich on April 12 for National Grill Cheese Day and donate the cost of the sandwich to St. Jude Hospital.

Now, I have the following for you to consider...June 21st is Summer Solstice. Have a nice glass of iced tea outside and enjoy those extra minutes because the days start getting shorter the very next day. Donate \$2.00 to St. Jude for the children that cannot enjoy being outside that day.

July is National Ice Cream Day...share an ice cream cone with an ESA Sister. Ice cream is expensive, so do it at home and put what you think the value of the ice cream is in a special little box for St. Jude.



July 5th is the day that Hawaii joined our great union...put aside \$.50 for our 50th state and celebrate with a "lei" around your neck and your 4th of July outfit from the day before.

National Rum Day is August 16...you know what to do. Then, set aside the cost of your favorite rum drink for the children at St. Jude Hospital.

Have a Watermelon Social on National Watermelon Day August 3rd. \$2.00 per slice or combine it with National Rum Day and concoct your own Watermelon Rum Drink...yes, charge more than \$2.00.



Now, find 69 pennies and donate it to St. Jude in honor of Valentina Vassilyeva who gave birth to 69 children. (Sixteen sets of twins, seven sets of triplets, and four sets of quadruplets.) I have tears in my eyes just thinking of that poor lady.

Collect all of your money by August 15 and send it to St. Jude at Headquarters. I can't wait to see your donation amount in the September St. Jude Report from Headquarters.

Have a great summer and remember the children at St. Jude that need our support.

Romanda Talley
St. Jude Chair



Mariposa Magic! from our Chapters...

ALPHA DELTA NEWS **Highlighting Derby's Days!**

Alpha Delta is heading into the summer months with much to be thankful for.

We just wrapped up another very successful "Derby Days" St. Jude Dinner and Auction and certainly made a nice profit for the kids at St. Jude. Frances Jennings and Wren Pirkle were our chairs. Our event was well attended with 112 people registered. They very generously opened their pockets and spent lots of money on our auction items and Mystery Boxes. However, the biggest money came from our Corporate Sponsors.



The venue at Sewell Mill in Bremen was beautifully decorated by Wren Pirkle and Sherry Giles. Deana Rosenbaum and Donna Moore did a great job on the dessert table and Frances Jennings and team took care of the rest. It was a lot of fun seeing all the ladies' beautiful derby hats and the men dressed for the Derby!!

And the best part, we sent our check to St. Jude – the amount was \$12,367.29!!! YEA!!!

Frances Jennings and I attended the Georgia State Council Convention at Amicalola Falls State Park in May. The view was amazing and we came home with a couple of awards – the St. Jude Spirit Award and 1st place for the ESA Foundation Turn Around Fund Award.



Congratulations to Susan Knudson on her leadership this past year and best wishes to Ruth Ann Edge as she assumes the presidency.

Like most chapters, we take the summer off to rest and rejuvenate and get geared up for the new year. Currently we are signed up to have a booth at the Bremen Towne Festival in October and will be selling BBQ Sandwiches and Plates. We have not selected a date for next year's St. Jude event, but rest assured we will let you know when it is planned.

Have a safe and happy summer.

Pat Griffin
Alpha Delta President



Butterflies- Nature's Confetti!

Forms and more...



2024-2025 ESA GSC AWARD WINNERS

Chapter Annual Philanthropic:

Most Monies per Member: 3rd Delta Omega (\$23,705.62), 2nd Kappa Rho (\$55,495.30), 1st Delta Nu (\$181,109.15)

Most Hours per Member: 3rd Alpha Beta (100.71), 2nd Delta Nu (108.24), 1st Delta Omega (638.50)

Overall Total: \$1,111,493.37

Philanthropic Summary: 3rd Kappa Rho, 2nd Delta Iota, 1st Alpha Beta (6 Chapters participated)

Willene Creamer Viglione Candlestick: Sharon Smoot, Delta Omega

St. Jude 1st Time Event: 3rd Delta Iota, 2nd Gamma Omega, 1st Kappa Rho

St. Jude Spirit Award in Memory of Pat Genovese: Alpha Delta, "Denim and Diamonds" Dinner & Auction (\$12,622.)

Easterseals: **Most Monies per Member:** 3rd Kappa Rho (\$28.), 2nd Delta Omega (\$63.), 1st Alpha Beta (\$141.)

Most Hours per Member: 3rd with Delta Iota (1.13), 2nd Alpha Beta (3), 1st Kappa Rho (6.5)

Overall Total: \$1,498. Hours: 84 (4 Chapters participated)

Hope for Heroes: **Most Monies per Member:** 3rd-Delta Iota (\$405.90), 2nd-Gamma Omega (\$1353.86),

1st-Delta Omega (\$5,303.50)

Most Hours per Member: 3rd Gamma Omega (17.43), 2nd Kappa Rho (23.57), 1st Delta Omega (447)

ESA Foundation: **Joyce Robyn, Foundation Turn Around Fund:** 2nd Alpha Beta (\$399.75), 1st Alpha Delta (\$12,352.)

Rosie Huggins, Foundation Award: 3rd Alpha Beta (\$180.), 2nd Kappa Rho (\$280.), 1st Delta Iota (\$330.)

Educational: **The Gold Seal:** 3rd Gamma Omega, 2nd Delta Omega, 1st Alpha Beta

The Gold Link: Alpha Beta, Delta Iota, Delta Omega, Gamma Omega, Kappa Rho (5 Chapters participated)

Angela Coleman Rushing Award: 3rd N/A, 2nd Kappa Rho, 1st Alpha Beta (2 Chapters participated)

Chapter with Most New Pledges: Tied for 1st place, Delta Omega & Kappa Rho

Willow Gray Rushing Award: Tied for 1st place, Theresa McGugan (Gamma Omega) & Wanda Price (Kappa Rho)

What ESA Means to Me: **Member Less than 1 year,** Judy Jenkins (Kappa Rho) ; **Member More than 1 year,** N/A

Disaster Fund: **Most Monies per Member:** 3rd Delta Nu (\$25.), 2nd Delta Iota (\$26.88), 1st Alpha Beta (\$43.71)

Overall Total \$861; (10 Chapters participated)

St. Jude Special Recognition: Alpha Beta, Delta Iota, Kappa Rho, Beta Sigma, Gamma Omega,

Alpha Delta, Beta Zeta, Delta Omega, Delta Iota, Delta Nu, Sigma Chi

2024-2025 ESA GSC OUTSTANDING AWARD WINNERS

- ❖ **Outstanding Pledge of the Year:**
Judy Jenkins (Kappa Rho #5125)



- ❖ **Outstanding Member of the Year:**
Debbie Lamp'l (Alpha Beta #5544)



- ❖ **Outstanding Chapter of the Year: Gamma Omega #5464**



Sheryl Gootee, Theresa McGugan, Gin West, Geri Barborek

ASSOCIATION OF THE ARTS:

Photography:

1st - Susan Garner
2nd - Romanda Talley
3rd - Romanda Talley

Mixed Media:

1st - Gennie Gilvin
2nd - Gennie Gilvin
3rd - Susan Garner

Quilting:

1st - Luanne Langmo

Holiday:

1st - Gennie Gilvin
2nd - Gennie Gilvin
3rd - Susan Garner

Presidential:

1st - Judy Jenkins,
2nd - Venetia Lewallen
3rd - Gennie Gilvin

Best of Show: Luanne Langmo - Quilt



.....
Life is better with a little winged company!
.....



FREQUENTLY ASKED PHILANTHROPIC QUESTIONS/ANSWERS

(revised 2012)

The following questions and answers are those asked most frequently. This is intended to be a "guide" to help you interpret the meaning of the official Philanthropic Guidelines. When in doubt, it is always best to ask your IC Philanthropic Chair.

Q. How are chapters registered for IC Awards?

- A. The state awards chairman and/or board member within your State is assigned to submit a list of chapters not registered for IC Awards to ESA Headquarters by December 1. All Chapters are automatically considered registered unless they are removed from the submitted list. Check with your state chair to be certain your chapters are registered.

Q. How do chapters keep track of hours and monies donated?

- A. Many chapter philanthropic chairs have a "member notebook" which is brought to each meeting to update activities or individual notebooks are distributed in order to keep track of one's hours/monies.

Q. Can an item donated to your chapter be used as a philanthropic project and be counted?

- A. Yes, using the monetary value of the item(s).

Q. Money from a September finance project will be donated in March. When do we count the hours/monies?

- A. Count the hours at the time of the project and count the money when it is donated.

Q. I work for "_____ Auxiliary". May I count my hours?

- A. If you are volunteering in the name of ESA and are involved with such BECAUSE OF ESA and it qualifies as "aid to those in need", the answer is "yes." If you work with "_____ Auxiliary" on your own, the answer is "no."

Q. Can I count the hours and monies on a project if no one else in the chapter works on it?

- A. If it is indicated in the chapter's minutes as a "blanket statement" that this project is chapter sanctioned, you may count the hours. However, it must be in the name of ESA and indicated as such. (Philanthropic Service Guidelines/Revised 2003 – III – Special – C.)

Q. We plan to give part of our Ways and Means Project proceeds to philanthropic projects and part to our treasury. How do we count the hours?

- A. Proportion hours according to the percentage of money given to your philanthropic project(s) and count only that number. For example, your project nets \$1,000 profit with 100 hours.

Your chapter uses \$250 for the budget and donates \$750 to philanthropic. The philanthropic hours report would be 75.

Q. Can a Member-At-Large (MAL) who works on a project count their hours and monies to help the state funds?

A. Yes! Any hours/monies that are donated to the State for a project that an MAL has worked on CAN be counted.

Q. Can I count the hours I spend on a chapter project even though I am the chair of the project?

A. Yes! All hours spent on a philanthropic project by ALL MEMBERS may be counted, however, the ADMINISTRATIVE hours of your elected/appointed office may not be counted.

Q. Does a Chapter need eight (8) or more members to qualify for awards or does it matter how many are in the chapter?

A. The minimum number of eight (8) is not longer used for awards based on percentage of members.

Q. Are collegiate chapter members considered part of the state count or do they participate in the awards as a separate chapter?

A. Collegiate chapters are part of your state's totals unless the state chair requested they not be registered for IC awards as discussed in a previous question. If they are registered and participate in a philanthropic project, count the hours and money as part of the state total.

Q. If the collegiate chapter chooses the Girl Scout troop in their community to assist with their ESA sponsored project/events, can those hours be counted?

A. The time spent on the ESA project with the Girl Scouts would be permitted to be applied to the ESA philanthropic service and if the sponsored project/event was being held to benefit the troop, the monies donated to them would also be permitted to be applied.

Q. Are Foundation Annual Dues counted as philanthropic/service monies?

A. Yes! ESA Foundation dues and monies contributed can be counted.

Q. What is the philanthropic year?

A. Philanthropic year: June 1 – May 31 is the Reporting Period. These dates are for the IC Philanthropic reporting and competing in awards presented at IC Convention. This may differ from your state ESA year which may be from convention to convention. (IC Philanthropic-Service Guidelines/Revised 2003 – III. Special E.)

Q. If a chapter hosting state convention donates a percentage of convention profits to the state philanthropic project, can that chapter also report the same percentage of their hours spent on planning and preparing for convention on the philanthropic report?

A. The ESA meeting/convention is NOT planned as a philanthropic project nor as a chapter fundraiser. The hours or percentage of hours worked or in planning CANNOT be counted toward philanthropic hours even if the profit is donated to the state philanthropic project. Only the documented funds may be counted as philanthropic monies by the chapter IF this is

PRE-DOCUMENTED in your chapter minutes and approved by the state. This response is true even if the chapter co-hosted convention with the ESA Foundation.

Q. Our chapter wishes to make a philanthropic donation through the ESA Foundation Turn-Around Funds. How does one accomplish this?

- A. Your chapter should make checks payable to "ESA Foundation." A form describing the correct instructions is available from your ESA Foundation Counselor or the ESA Foundation, 2580 E Harmony Road Suite 301-11, Fort Collins, CO 80528, phone: 970-223-2824, or can be found on www.epsilonsigmaalpha.org under the Foundation.

Q. The mileage rate changes periodically. How does one govern the rate increase?

- A. The mileage rate changes accordingly to the IRS rates. Most states go with what the IRS rate is at the beginning of their year to make it fair to all members and less confusing to the State Philanthropic Chair.

Q. May travel time to/from a philanthropic project be counted?

- A. Yes! Each member may count travel time even when riding with another member; however, *only the driver* may count the cents per mile (current IRS rate) for monies. You may not count travel time to/from a scheduled chapter meeting even though philanthropic work is performed at this meeting. Additionally, NO air travel time or funds paid to the airlines may be counted by an elected/appointed IC or Foundation officer as these are administrative positions and NO FUNDS are actually donated to or used for philanthropic projects.

Q. How do we report aid to a chapter ESA member?

- A. Monies donated by the chapter are reported as chapter donations; hours spent by members helping the member or private funds are listed by the individuals for a total chapter accounting, e.g., a member is seriously ill and needs assistance, the hours spent by another member assisting them are counted and any monies donated by either the chapter or an individual member are counted. If your chapter furnishes food for the funeral of a member or her immediate family, members may count the hours spent purchasing and making the food and any monies donated to assist with expenses of the member. (IC Philanthropic-Service Guidelines/Revised 2003 – III – Special B.)

Q. Can hours spent by a chapter taking a Red Cross First Aid course be counted as philanthropic hours?

- A. No. You are not aiding those in need even though you derive benefits from the course and may later use it to benefit the disabled or those in need. If your chapter organizes and sponsors a First Aid class and advertises it as "ESA Sponsored", then your members may count hours spent in planning and organizing the class, but not time in the class.

Q. Our chapter of five organized a Roller Derby last summer to benefit one of our IC philanthropic projects. In the fall, with several members moving out of town, the three remaining members decided to disband our chapter and join another chapter in our city. How do we count the hours spent and monies earned on our Roller Derby?

- A. A "Final Chapter" report should be sent to your state philanthropic chair listing the hours and monies donated by the five members. This will give an accurate accounting of the state's philanthropic hours and donated monies for the current year. The members joining another chapter need to begin a new count of the hours and philanthropic donations they are now

accumulating. Hours and monies may be counted only once and with the chapter that planned and organized the event.

Q. If I purchase items at a chapter garage sale designated as a fundraiser for our philanthropic project, can that money be counted as a donation?

A. Yes! The money would be counted as part of the total donation to the project.

Q. How much time should be counted for collecting the toner cartridges for Easter Seals?

A. Cartridges count only for the total number sent to the recycling company per chapter. The recycling company sends these totals to the IC Easter Seals Chairman quarterly for the reports. Hours, etc. are not counted for the Cartridges for Kids program.

Q. When collecting Campbell soup labels, how much time can be counted?

A. You may count the time it takes to drive to and from the store.

Our ESA Philanthropic Service Guidelines state that *"philanthropic service is the time and money directed toward the betterment of mankind . . . to improve the conditions and promote the welfare of those who need it."*

PHILANTHROPIC SERVICE GUIDELINES

The purpose of these Guidelines is to clarify that our philanthropic service is the time and money directed toward the betterment of mankind - to improve the condition and promote the welfare of those who are in need of it. These guidelines are for the purposes of ESA recognition and do not necessarily reflect IRS requirements. Please consult your accountant for clarification.

I. General Information

- A. Hours and monies donated by an ESA member in "the name of ESA", can be counted.
 - 1. Hours represent the time spent from beginning to completion of a project.
 - 2. Monies represent cash donations from the chapter treasury or by a chapter member to a service project.
- B. Donated Goods are estimated by figuring 15% of the retail value on used items and full retail value on new items.
- C. Roundtrip mileage (for driver only) on an ESA service project may be counted. For current rates, use the current IRS rate as of August 1st which is noted on the attached form.
- D. Civic services are community projects, not necessarily related to ESA projects.
- E. Individuals can count volunteer service hours done in an education setting or group activity even if their child is involved. Church activities cannot be counted if a member is employed by the church. Activities done for an organization associated with a church can be counted provided the chapter members are doing their philanthropic works in the name of ESA and it is indicated as an official chapter project in chapter minutes.
- F. Service monies are the portion of ways and means projects donated to charitable and civic projects.
 - 1. If all the proceeds are donated, count all monies and total hours spent raising funds. If proceeds are divided among several projects, monies and hours should be divided on a percentage basis.
 - 2. If only a portion of the proceeds are donated, count only a portion of the hours and money. Figure which percent of the net proceeds is being donated, and count the same percent for hours.
 - 3. If a fundraiser event is specified or advertised as a "benefit" for any philanthropic project(s) total net proceeds must be donated to project(s).

- II. **Hours and monies** for ESA Affiliated Projects (i.e., St. Jude Children's Research Hospital-ESA for St. Jude, National Easter Seals Society, ESA Disaster Fund, and ESA Foundation) should be counted the same as any other project.

III. Special

- A. Babysitting-member may count hours on a project when sitting for an ESA member working on an ESA service project. (Do not count monies paid to a sitter)
- B. Aid to an ESA member - count hours/monies should a member be "in need or disabled" due to chronic/terminal illness or other disaster or extreme setback.
- C. Blanket Statement – At the beginning of the year, Chapters should indicate all of their major projects; members can count hours/monies donated towards these specific projects. All philanthropic projects are to be listed in the Chapter's minutes.
- D. Snowbirds – If a member belongs to a different chapter while away from her home chapter for a period of time, she is allowed to report hours and/or monies for ESA philanthropic projects/events in accordance with the chapter that sponsored the project.

Philanthropic Year – June 1 - May 31 is the Reporting Period. These dates are for the IC Philanthropic year for reporting and competing in awards presented at the International Convention only. This should not be made a requirement for each State or Chapter to follow for philanthropic reporting.

IV. Clarifications

- A. Homemade Items donated to a philanthropic-service project – count time spent making, baking, etc. and the value of materials used in the items. Homemade items cannot be counted as cash until they have been sold.
- B. National Drives, Radiothons/Telethons
 - 1. When an event is totally organized by ESA, count all hours worked
 - 2. monies received, less expenses
 - 3. If a Chapter only performs part of the work, count hours only. The percentage factor on the ESA chapter's responsibilities, and mutual agreement between the fund-raising organization and the ESA chapter(s) prior to the event, will determine the monies credited to ESA.
- C. St. Jude Children's Research Hospital
 - 1. Reporting is counted the same as any other ESA service project. Count all hours/mileage and net monies donated.
- D. Do not count extra hours or monies spent or a complimentary room voucher for working in a distant city for a St. Jude event.

V. National Easter Seals Society

- 1. Reporting is counted the same as any other ESA service project.
- 2. Check with your local Easter Seal Coordinator relative to the "Cartridges for Kids-Easter Seals" project.

VI. Bloodmobiles and Blood donations

- 1. Count chapter hours for sponsoring the drive and registering donors, etc.
- 2. Count ESA member's blood donation (whole blood = \$50 per pint & platelets = \$200 per pint)

VII. ESA Foundation Turn-Around Fund

- 1. Make your chapter check payable to "ESA Foundation".
- 2. A form can be found on the Foundation website www.epsilonsigmaalpha.org, or through your ESA Foundation Counselor or the ESA Foundation, 2580 E. Harmony Rd. Suite 301-11, Fort Collins, CO 80528. Telephone: (970) 223-2824.

VIII. Cash Register Receipts

- 1. Receipts redeemed for computers and other school equipment may be counted as a donation.
- 2. Count only 12.5% of the total amount of the receipt, not the total amount

IX. Manufacturer's Coupons

- 1. Count manufacturer's coupons donated as part of a service project as face value stated on coupon.
- 2. Count chapter hours for preparing donated manufacturer's coupons.

Georgia State Council Philanthropic Awards

1. Chapter Philanthropic Work - Most Monies per Member and Most Hours per Member

- First, second and third place certificates will be presented to the chapters donating **Most Monies per member**.
- First, second and third place certificates will be presented to the chapters donating **Most Hours per member**.

The chapter member count of March 31st shall be determined by the print-out sent from ESA Headquarters to the State Membership Director who shall provide a copy to the State Philanthropic Chair.

Entries must be submitted on the Philanthropic Award form provided by the State Awards Director and **2 copies** mailed to Philanthropic Chair postmarked by **April 15th**.

- One (1) copy will be used for judging.
- One (1) copy will be used for compiling the "**ANNUAL PHILANTHOPIC REPORT**" form provided by International Council to be postmarked by June 10th.

The Philanthropic Chair will provide the State Awards Director a list of winning chapters, total reported hours/monies for each winner, and total reported hours/monies from all chapters. The State Awards Director will provide certificates for Awards Presentation.

SERC Award guidelines reflect fiscal year reporting. State Philanthropic Chair provides the GSC President a copy of the completed "ANNUAL PHILANTHOPIC REPORT" for entries in SERC Awards.

2. Philanthropic Summary Award of Excellence

This award recognizes the chapter with overall excellent philanthropic work and participation at all levels of ESA.

First, second, and third place certificates will be presented by Georgia State Council. Certificates will be provided by GSC Awards Chair.

The Philanthropic Summary Award Form will be judged (using the judging sheet provided by the GSC Awards Chair and on esageorgia.com) to determine the winners.

3. Willene Creamer Viglione Candlestick Award

A certificate will be presented to the individual member contributing the most hours of service through ESA Philanthropic Projects.

Based on individual member contributing the most hours of service through ESA Philanthropic Projects from **April 1st through March 31st** for which she received no salary, bonus, etc. Entries must be submitted on the form provided by the **State Awards Director**.

All entries should be mailed, **postmarked by April 15th** to the **State Philanthropic Chairman**



2025 INTERNATIONAL CONVENTION

A Southern Serenade

July 13 – July 20, 2025

Embassy Suites by Hilton Raleigh-Durham/Research Triangle

201 Harrison Oaks Blvd., Cary, NC 27513

Embassy Suites at: (919) 677-1840



MEMBER NAME _____ MEMBER NUMBER/STATE _____ / _____

ADDRESS _____

CITY, STATE, ZIP _____

CELL # _____ EMAIL _____

CHAPTER NAME _____ CHAPTER # _____ STATE COUNCIL _____

DATE OF ARRIVAL _____ TIME OF ARRIVAL _____ FLY DRIVE USING SCOOTER Y N

DO YOU NEED A NAME BADGE HOLDER? Y N

ROOMMATE(S) _____

Each registered quest will receive an email confirmation after form and payment has been received

CHECK ALL THAT APPLY

☐ First IC Convention ☐ Pledge ☐ ELAN ☐ Collegiate Member – Campus ☐ HQ Staff

ESA Foundation Board ☐ IC Elected/Appointed Board ☐ Past IC President (year) _____

2024-2025 State President – State _____ 2025-2026 State President – State _____

Previous State President ~ State(s)/Year(s) _____ Served with: _____

I will be recognized at convention for my years of ESA Service 25-80 years in 5-year increments: _____

Dietary Restrictions: The hotel will do its best to accommodate **DIETARY RESTRICTION requests only.**

Restriction or Allergy alert: _____ (Additional costs may apply)

MEMBER FULL REGISTRATION FEE:

Includes general assemblies, workshops,
welcome party, recognition luncheon and banquet

Postmarked by May 1, 2025. \$275

After May 1, 2025 (see payment note on page 2) \$325

MEMBER FRI. & SAT. REGISTRATION FEE:

Includes general assemblies, recognition
luncheon and banquet

Postmarked by May 1, 2024 \$250

After May 1, 2025 (see payment note on page 2) \$300

MEMBER SAT. ONLY REGISTRATION FEE:

Includes general assembly and banquet

Postmarked by May 1, 2025 \$150

After May 1, 2025 (see payment note on page 2) \$200

MEMBER/NON-MEMBER WALK-IN REGISTRATION FEE:

Includes everything in full registration

☐ See payment note \$350

*PICPA STATE PRESIDENT'S LUNCHEON (ADDITIONAL FEE) \$45
(all past and present state presidents/IC presidents)

*If served with multiple IC presidents, indicate with whom you wish to sit? _____

SUBTOTAL MEMBER REGISTRATION:

CONVENTION HOTEL ROOM RATES

Single/Double \$175 plus tax. Triple \$185 & Quad \$195 plus tax.

To receive the group rate, you MUST make reservations by June 23, 2025.

In House Reservations at (919) 677-1840; reference code: ESA

or click on the link:

Hotel Reservation Link: www.hilton.com/en/attend-my-event/epsilonsigmaalphaconference/

MEMBER MAY NOT REGISTER AS NON-MEMBER FOR ANY EVENT

NON-MEMBER NAME

Please indicate if special guest of the following: **ALSAC** **EASTERSEALS** **INCOMING IC PRESIDENT**
OTHER (Please specify)

NON-MEMBER FULL REGISTRATION FEE:	Postmarked by May 1, 2025	\$275
Includes general assemblies, workshops, welcome party, recognition luncheon and banquet	After May 1, 2025 (see payment note below).....	\$325
NON-MEMBER attending WELCOME PARTY:	Postmarked by May 1, 2025	\$ 65
	After May 1, 2025 (see payment note below).....	\$115
NON-MEMBER attending RECOGNITION LUNCHEON:	Postmarked by May 1, 2025	\$50
	After May 1, 2025 (see payment note below).....	\$100
NON-MEMBER attending BANQUET:	Postmarked by May 1, 2025	\$75
	After May 1, 2025 (see payment note below).....	\$125
YOUTH REGISTRATION FEE (age 12 & under):	Postmarked by May 1, 2025	\$100
Includes general assemblies, welcome party, recognition luncheon and banquet	After May 1, 2025 (see payment note below).....	\$125
YOUTH REGISTRATION FEE (age 13-17):	Postmarked May 1, 2025	\$150
Includes general assemblies, welcome party, recognition luncheon and banquet	After May 1, 2025 (see payment note below).....	\$175

***List dietary restrictions for
non-members on page one,
indicating who has the restriction.

SUBTOTAL NON-MEMBER REGISTRATION:
ENTER TOTAL FROM FIRST PAGE:
TOTAL REGISTRATION:

MEN'S GOLF . . . Indicate days you would like to play golf.

I wish to golf: ☐ Monday ☐ Tuesday ☐ Wednesday ☐ Thursday ☐ Friday ☐ Saturday

SELECT ONE PAYMENT TYPE

****PAYMENT NOTE:** Payment after May 1, 2025 must be paid by **MONEY ORDER, CERTIFIED CHECK, OR CREDIT CARD AND MAILED TO THE IC REGISTRATION CHAIR BEFORE JUNE 1, 2025. After June 1, 2025, mail registration form only – DO NOT SEND PAYMENT. Email the registration chair that the form has been mailed and bring a copy of the registration form with money order, certified check, cash or credit card to the IC Convention.**

Check Money Order PayPal (ESA IC Convention - A fee of 4% of the total transaction amt. will be assessed.)

Make Check or Money Order payable to: ESA IC 2025 Convention (A \$45 fee will be assessed for any returned check.)

Zeffy Registration has been added for Credit Card Payment, it is on the ESA Website.
www.epsilonsigmaalpha.org under IC Convention

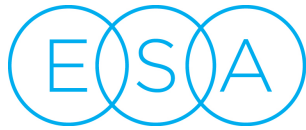
If you CANNOT use Zeffy for some reason and need to pay by credit card contact
Denise Holdaway 870-838-6916

CANCELLATION: If you find it necessary to cancel this registration, the full amount less a \$50 processing fee will be refunded when **WRITTEN** cancellation is postmarked **NO LATER THAN JUNE 15, 2025. NO REFUNDS AFTER JUNE 15; TRANSFER ONLY.**

TRANSFER TO ANOTHER MEMBER: One time transfer allowed, \$15 transfer fee. See separate form.

Mail registration form with payment to:
Online Registration form can be
found at
www.epsilonsigmaalpha.org

Casey Hoffman & Dawn Middleton
ESA IC Registration Chairs
830 North Street, McComb, MS, 39648
Questions? Call Casey @601-551-9525 or Dawn @601-810-6508



EPSILON SIGMA ALPHA



"Butterflies know the Beauty of Change "

Georgia State Council Fall Board/Leadership

Dalton Shrine Club

514 Chattanooga Avenue; Dalton, GA 30720

September 6 & 7, 2025

Name _____ Chapter/Number _____

Telephone # _____ E-mail _____

Dietary Needs _____

REGISTRATION FEES

Members & Guests (Includes Saturday lunch) \$40.00

Late Registration Fee (After August 1, 2025) \$10.00

Walk-in Registration Fee \$55.00

Hosted by Delta Nu and Sigma Chi

TOTAL

Make Check Payable to: Delta Nu

Send registrations to:

Vicki Warren

125 Brandon Court

Calhoun, GA 30701

vickiwarren57@gmail.com

Registration Deadline: August 19, 2025

(cancellations received in writing or email by August 19, 2025 will receive a full refund.)

*If you are planning to attend and have not registered by **August 25**. Please contact Vicki Warren and hold your check to pay at Leadership.*

Hotel Accommodations: The Carpentry Hotel
204 W Cuyler Street
Dalton, GA 30720

Individual Reservations: **706-529-3040** Group: **ESA GA** Rate: **\$169**

Arriving: Friday, September 5th, 2025

Departing: Sunday, September 7th, 2025

Hotel Cutoff Date: 7/25/25

SERC CONFERENCE 2025
"Celebrate ESA Under the Carolina Moon"

Myrtle Beach, SC
October 24-25, 2025

State Council

Last name (Please print)

First name

Address

City

State

Zip

Telephone

Email

Mark All That Apply:

- | | |
|--|----------|
| <input type="checkbox"/> Full Member Registration (through 10/1/25) | \$155.00 |
| <input type="checkbox"/> Full Member Registration (after 10/1/25) | \$165.00 |
| <input type="checkbox"/> Full Non-Member Registration (through 10/1/25) | \$155.00 |
| <input type="checkbox"/> Full Non-Member Registration (through 10/1/25) | \$165.00 |
| <input type="checkbox"/> Full Guest Registration (through 10/1/25)
(Includes Fri Night Mixer and Banquet) | \$130.00 |
| <input type="checkbox"/> Full Guest Registration (after 10/1/25) | \$140.00 |

TOTAL ENCLOSED \$ _____

Guest Full Name: _____

Medical Dietary Requirements: _____

Check all that apply:

SERC Elected Board	IC Elected Board	New Member (pledge)
SERC Appointed Board	IC Appointed Board	First Time Attendee
SERCHETTE	PICPA	Headquarters Staff
STATE President	ESA Foundation Board	Other, please specify

Make Checks Payable to:

South Carolina State Council

Mail Registration and Check to:

Sondra Kucklick, 117 Messina Street
Moncks Corner, SC 29461
843-834-1228 jefsan123@gmail.com

Hotel: Landmark Resort

Room Rates: \$75-\$130/night

2 night minimum

Phone: 855-338-0226

\$15 resort fee

13% SC state tax

1501 S Ocean Blvd

Myrtle Beach, SC 29577

Group Name: ESA SERC 2025 Group Code:

Cut off Date for Room rate 09/24/2025

ESA

Celebrate ESA

Epsilon Sigma Alpha

Under the Carolina Moon

SERC Conference 2025 October 24-25, 2025

Ad Order Form for Program Book

Name _____

Telephone _____ Email _____

Address _____

City/State _____ Zip _____

Please Circle

Requested Ad Size: Full Page \$100 Half Page \$50 Quarter Page \$25

Note: Add \$10 to full Page or \$5 to Half Page if using a colored Background.

Layout Assistance needed: Yes No

Due by October 1, 2025

Make Checks Payable to: South Carolina State Council

Mail Form and Check to: Terry Holifield

135 Christian Lane

Summerville, SC 29486-2340.

Please email an electronic Copy of your ad to: terryholifield135@gmail.com.

🕒 HOURS

Hours: 9:30 AM - 5:00 PM

For daytime admission, gates close at 4:30 PM. For their safety and the safety of our animal collection, **pets are not allowed**, nor can they be left in vehicles inside Brookgreen. Service animals that have received special training to assist disabled persons are welcome.

🎫 TICKETS

DAILY GENERAL ADMISSION TICKETS FOR 7
CONSECUTIVE DAYS

Children 3 and under: Free

Children 4-12: \$12

Adults 13-64: \$22

Seniors 65 & Over: \$20

📍 LOCATION

1931 Brookgreen Drive
Murrells Inlet, SC 29576

Brookgreen Gardens

DINING



The Courtyard Cafe is located in the Lowcountry Center and offers salads, sandwiches, and wraps.

Daily | 10:30 AM - 3:30 PM

[Menu](#)

The Old Kitchen is located at the end of Live Oak Allée and offers sandwiches, salads, wraps, desserts, beverages, and light refreshments. The porch is a great place to relax overlooking the beautiful gardens.

Daily | 10 AM until 4 PM



As Brookgreen Gardens is home to many different types of wildlife, we recommend the following for a safe visit.

- Be aware of your surroundings.
- Please admire, don't pick. Preserve our garden's natural beauty.
- Do not approach, feed, or otherwise bother wildlife.
- Avoid the edge of ponds and ricefields.
- No swimming or wading in any pools, ponds, or other bodies of water.
- Closed-toe shoes are recommended.
- Stay on the paths.
- Bring sunscreen and insect repellent if necessary. This is also available to purchase at Keepsakes.

As an educational and cultural institution that welcomes children and families, no concealable weapons are allowed at Brookgreen Gardens.

What is included in General Admission?

Your general admission ticket includes all gardens and galleries, the Lowcountry Zoo, and exhibits in the Lowcountry History Center. Your ticket is good for 7 consecutive days.



Oct 23, 2025
12pm

Limited transportation from
the Landmark available.

Please email

MelissaGFinch78@gmail.com
to coordinate.